

LITTLE DIXIE REGIONAL LIBRARIES

- 2020 Annual Report -
Serving Randolph &
Monroe Counties



In this annual report:

Who are we?

Page 02

Library Board

Page 03

Library Staff

Page 04

Statistics & Financial Highlights

Page 05

Branch Statistics

Page 06

Online Databases

Page 07

Outreach & Favorite Authors

Page 08

Friends of the Library

Page 09

Locations

Page 10

2020... *A YEAR UNLIKE ANY OTHER*

By: Director of LDRL, Rachael Grime

As everyone else this past year, LDRL was in a bit of a whirlwind. Yet, as with any new challenge, we have found ways to adapt and overcome the circumstances in which we found ourselves. We developed curbside delivery, extended outreach services, and put new protocols in place within our buildings to make patrons feel safer and create a welcoming atmosphere.

Through grants from the Missouri State Library, LDRL was able to have an online summer reading program and purchased hotspots to provide internet to patrons at home as needed.

Who knows what 2021 has in store for us but I for one am excited to see what's coming. *As always, there is something for everyone at your library!*



LDRL MISSION STATEMENT

Little Dixie Regional Libraries exists primarily to meet the information and learning needs of all residents within its service area.

The role of the library is to provide access to and actively promote public awareness and usage of materials and services to meet these needs, as well as to preserve the cultural and intellectual heritage of the service area.

LDRL is a two county public library system service Randolph and Monroe Counties except the 1965 incorporated area of Monroe City.

WHO ARE WE?

The Randolph County Library District was organized in 1946 excluding the cities of Huntsville and Moberly, where municipal districts were in existence. In 1958 Huntsville joined the Randolph County Library District, and in 1969 the City of Moberly joined.

In 1953, Monroe County Library District formed, excluding the incorporated towns of Paris and Monroe City, which had their own libraries. The Monroe County Library District immediately contracted with Randolph County for library service, forming Little Dixie Regional Libraries. In 1967, Paris joined the Monroe County Library District. In June 1966, a Monroe County circuit court decree was signed to allow the Atterbury Trust funds to be used for a public library building in Madison. The Madison library was completed August 17, 1970, and the Atterbury Trustees released the building to the Monroe County Library Board. The Atterbury Memorial Library opened on November 6, 1970.

Little Dixie Regional Libraries is supported financially by a property tax which is levied annually by the respective counties.

LIBRARY BOARD

Each County Commission appoints five board of trustee members to that county's library district board. These members serve their respective counties on the Little Dixie Regional Libraries board. Little Dixie board members determine library policy, approve expenditures of library funds, hire the director and approve other appointments.

LDRL Board

President: Linden Vanlandingham

Vice President: Marilyn Rasmussen

Treasurer: Twana Hulen

Members:

Robert Brandon, Randolph County

Paula Delaney, Monroe County

Mary Jane Havens, Monroe County

Peggy Peck, Monroe County

Ron Self, Randolph County

Jackie St. Clair, Randolph County

Joan Snodgrass, Randolph County

"Libraries store the energy that fuels
the imagination.

They open up windows to the world
and inspire us to explore and achieve,
and contribute to
improving our quality of life."
~Sidney Sheldon



Library Staff

Director - Rachael Grime

Children's Services - Katherine Long

Young Adult & Adult Services - Taylor Bequette

Reference & Genealogy - Shannon Green-Kingery

Outreach Services - Abigail Amirault

Cataloging - Susan Gully

Administrative Assistant - Sheryl Morgan

Computer Services - Kelly Garnett

Circulation Staff - Melissa Wetzel, Robin Fara, Emma Gilmour, Makiaya Hughes

Support Staff - Deborah Regan, Mallorie Waite, Cassie Tufts

Delivery & Maintenance - Larry Apel

Custodian - Gary Bush

Paris Staff

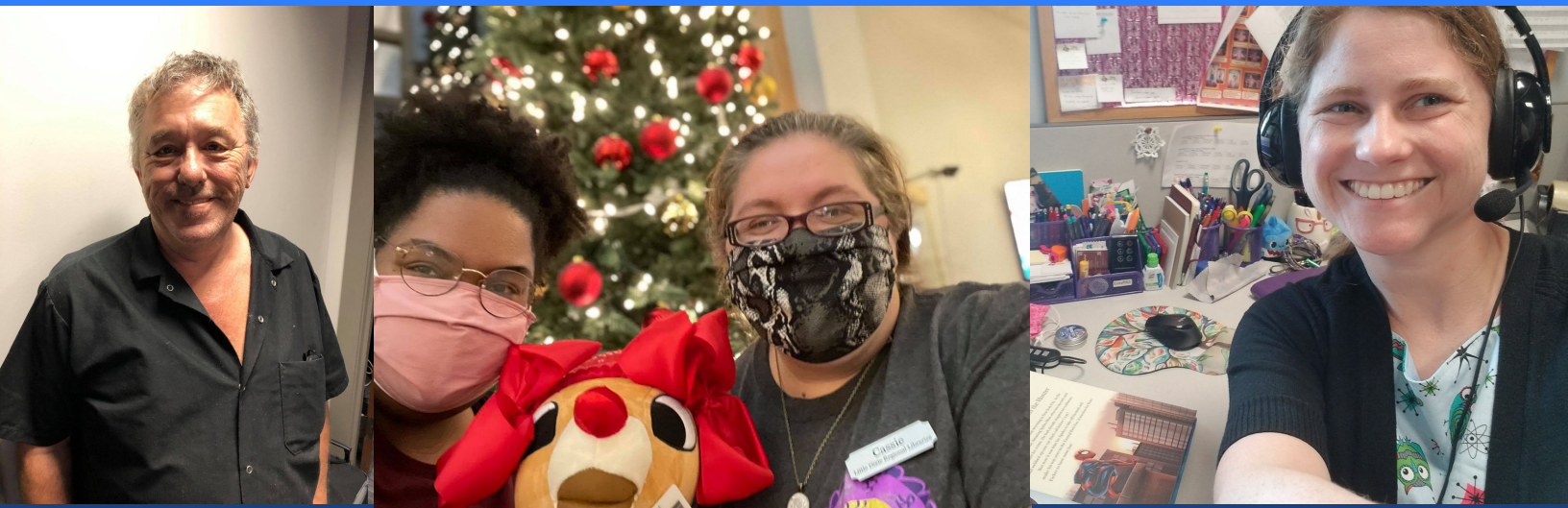
Sue Mattingly (Manager),
Carol Schoonover & Bob Mitchell

Madison Staff

Carol Kroeckel (Manager) &
Susan Butler

Huntsville Staff

Lora Colley (Manager),
Bennie Brown & Darla Higgins

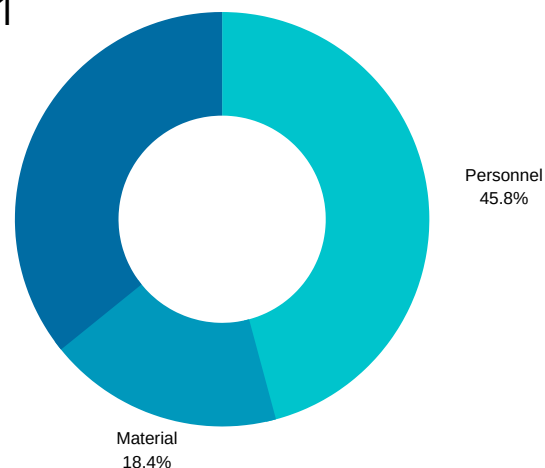


BY THE NUMBERS...

- 2 Counties Served
- 4 Library Branches
- 26,033 individuals have library cards
- 1,388 new cards were created in 2020
- 13,109 new items were added to the library collection
- 165,938 physical items were checked out
- 54,064 digital items were checked out (+34% increase)
- 11,691 holds were fulfilled for library patrons
- 183,214 items are currently owned by LDRL for checkout

FINANCIAL HIGHLIGHTS

- Personnel: \$728,437.59
- Materials: \$291,957.83
- Support Services & Maintenance: \$569,578.91
- Total Expenditures: \$1,589,974.66



TECHNOLOGY

- 32 public access computers available for public use
- 4 computer labs
- 6,197 computers used by patrons
- 12,758 wireless computer sessions

BRANCHES - BY THE NUMBERS

Huntsville

- 10,459 materials checked out
 - 519 computers used
 - 709 holds provided
 - 2,058 books loaned to other libraries
-

Madison

- 9,394 materials checked out
 - 256 computers used
 - 1,301 holds provided
 - 1,405 books loaned to other libraries
-

Paris

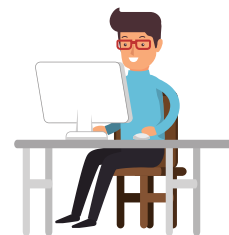
- 19,625 materials checked out
 - 830 computers used
 - 2,666 holds provided
 - 2,058 books loaned to other libraries
-

Moberly

- 80,518 materials checked out
- 4,412 computers used
- 7,015 holds provided
- 8,847 books loaned to other libraries

ONLINE DATABASES

ALWAYS AVAILABLE AT WWW.LDRL.ORG



Newspaper Archives – the world's best resource for historical and genealogical information. Our unique archive spans more than 400 years of family history, small-town events, world news and more. Explore your family tree and discover your history at NewspaperARCHIVE.com, the world's largest online newspaper archive.

HeritageQuest – a comprehensive treasury of American genealogical sources—rich in unique primary sources, local and family histories, convenient research guides, interactive census maps, and more. Discover the amazing history of you with HeritageQuest Online. It delivers an essential collection of genealogical and historical sources—with coverage dating back to the 1700s—that can help people find their ancestors and discover a place's past.

MyHeritage – access to billions of historical documents, millions of historical photos and other resources in thousands of databases that span the past five centuries. Remote access and a mobile-friendly interface make it the most convenient genealogy product for libraries

A to Z Databases – simple, user-friendly, web-based solution provides details on every business and every household within the U.S. AtoZdatabases is the premier reference and marketing database marketed to Library, Academic, and Government institutions throughout the U.S. This simple, user-friendly, web-based solution provides details on every business and every household within the U.S.

Chilton's Automotive Online – access accurate, complete, detailed repair and service information for any make and model of car, truck, van or SUV, all available online in a fast clear format. Any car DIY job from suspension, brakes, clutch or gearbox, to electrical and engine diagrams for auto repair, we have it all online.

Mango – teaches everyday greetings, gratitudes, goodbyes and helpful phrases in a short period of time. The courses, which require only two to five hours of time to complete, are currently available in 34 foreign languages and 15 English as a Second Language (ESL) courses.

Hoopla – public availability of thousands of movies, television shows, music albums, ebooks, and audiobooks, all available for mobile and online access through a new partnership with hoopla digital– all you need is a valid library card!



OUTREACH SERVICES

Are you or is someone you know homebound or have health concerns? Over the age of 65 and just can't get to your library like you want to?



We have a service for that! Give us a call at 660-263-4426 and we will arrange for books to be delivered to your home directly to you at no charge. In town delivery or mail delivery to those living outside of the city limits.

**Fast, friendly, and free,
let's bring the library to you!**

FAVORITE AUTHORS LIST

Your favorite library is always working to help our patrons lives to be a little easier.

With the **Favorite Authors Club**, be placed on hold for your favorite authors for EVERY new title that comes out before they ever go on the shelf.

You get all the new releases...
every single time.

Ask at the circulation desk
of your LDRL Branch or
signup at www.ldrl.org/author



MOBERLY FRIENDS OF THE LIBRARY

Thank you for....

- Supported Library staff attend conferences
- Held "special" staff days
- Supported Library programming
- Helped purchase summer reading prizes for patrons
- Ongoing booksale in the lobby of the Moberly Library



PARIS FRIENDS OF THE LIBRARY

Thank you for....

- Supported Library staff attend conferences
- Held "special" staff days
- Supported Library programming for all ages
- Helped purchase summer reading prizes for patrons
- Ongoing booksale in the lobby of the Paris Library



Why become a Friend?

From hosting book sales, bake sales or fundraising efforts to voicing support for the library by attending town hall meetings and city council meetings, or just spreading the word about the great services and value the library brings to your community.

Thank you for being a friend!

LOCATIONS

Moberly Branch

111 N. 4th St.

Moberly, MO 65270

660-263-4426

Paris Branch

101 N. Main St.

Paris, MO 65275

660-327-4707

Huntsville Branch

102 E. Library St.

Huntsville, MO 65259

660-277-4333

Madison Branch

113 E. Broadway St.

Madison, MO 65263

66-291-3695

Find us online

www.ldrl.org

[Facebook.com/littledixielibraries](https://www.facebook.com/littledixielibraries)

